

# ON-LINE ORDERING SYSTEM FOR POPs SAMPLING MODULES

Field sampling procedures, especially for Persistent Organic Pollutants, are generally time consuming and very demanding in equipment and staff. They have prominent implications in the final analytical results.

In order to help clients striving for simplicity and clarity of sampling program, to ease manipulation and logistics during sample collection and to produce consistent data, ALS Czech Republic provides highly specific services to the field of air toxics – emission and ambient air.

## CLOSE COOPERATION WITH SAMPLING TEAMS

We have created a specific Portal for sampling teams to ease the ordering of laboratory sampling equipment:

<http://sampling.alsglobal.eu>

After a brief registration, you are welcomed to fulfil a sequence of questions which helps you to order the equipment you exactly need for emission or ambient air sampling, for instance:

- Pre-cleaning sorbents, filters and sampling standards
- Emission XAD-2 traps or PUF traps and ambient air TO-9A traps
- Spiking of sampling train or provides sampling standard for emission sampling according to the required methodology
- Shipping sampling material directly to client in the required timeframe

**Confirmation of received order is sent to you by email.**

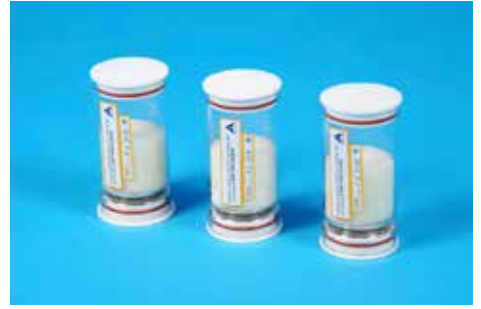


## THE SHIPMENT YOU RECEIVE WILL CONTAIN:

- Required sampling material
- Protocol of sampling standard preparation
- Protocol of XAD-2 or PUF preparation
- List of shipment content
- All other documents in relation with the ordered material (Short guideline how to spike the sampling standard, etc.)

**TRANSPORT WILL BE CHARGED ACCORDING TO YOUR AGREEMENT WITH ALS**

## SAMPLING EQUIPMENT



SVOC sorption module – PUF

SVOC sorption module – XAD

SVOC sorption module – ambient air

The sampling modules are prepared according to **EN 1948, US EPA 23A, US EPA TO-9A, EN 1948-4, JIS K0311, US EPA 429 (ISO 11338)** methods.

Traps already spiked in our laboratories should be kept in the dark at a temperature between 2 and 8°C. Holding times depend on the method:

Method/norm	TO-9A	EPA 23	EN 1948	EPA 429	ISO 11338	JIS K 0311
Holding time	30 days	28 days	2 months	21 days	Not specified	Not specified

We hope that our ordering system makes our common activities in the field of POPs sampling easier. Do not hesitate to send your feedback.

Portal for sampling teams to ease the ordering of laboratory sampling equipment:  
<http://sampling.alsglobal.eu>

**In case of any questions do not hesitate to contact us:**

**ALS Czech Republic, s. r. o.**  
 Na Harfě 336/9  
 Prague 9 - 190 00

www.alsglobal.eu  
 email: customer.support@alsglobal.com  
 tel: +420 226 226 228